

SpecView[®] 32 for Honeywell

Auto-Configuring HMI, Reporting and Recipe software for Honeywell Hybrid, Multiloop and Temperature Controllers, Programmers & Recorders

“Instrument Views”

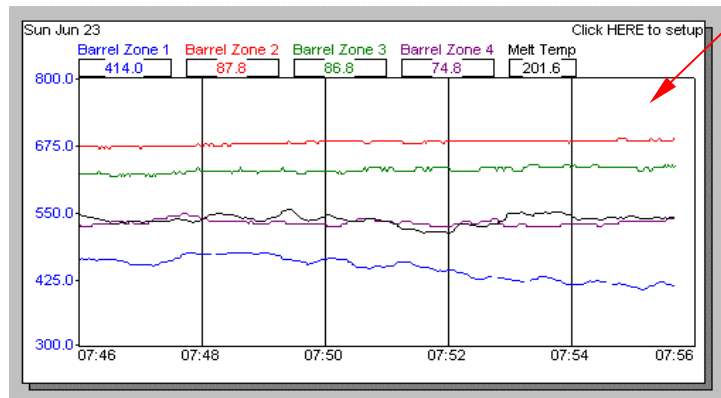
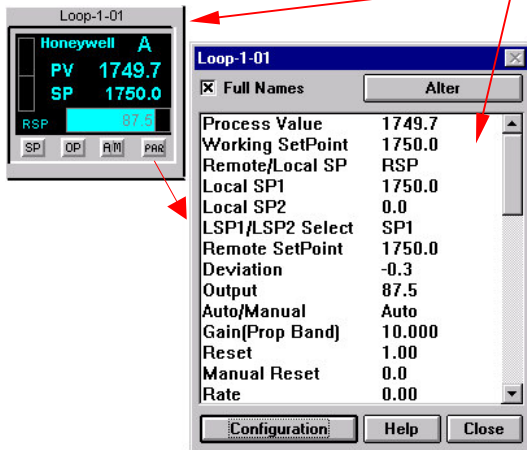
- Organized parameter groups for product
- **Automatically created, no database entries!**
- Loop views operate like the controllers
- Pop-up interactive windows

Parameter Access

- **See and adjust all parameters**
- Familiar names
- “Short List” option
- **Help** on parameters

Trend Charts

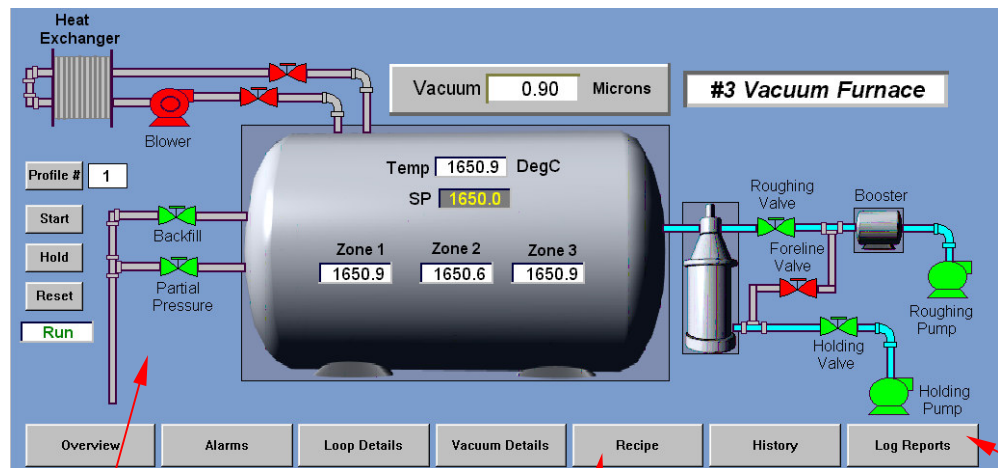
- Unlimited number of charts
- Unlimited number of pens
- Re-scale & re-assign pens
- Historical replay
- Cursor access to values
- **Chart Printing**



New!

**SpecView 32
Networking**

**Remote (Client)
Stations over
Ethernet or
Internet**



Easiest Graphics

- Use the simple drawing tools
- Import bitmaps and size
- Create and store objects for re-use

Recipe System - Standard!

- Select just the variables you want
- Include SP program data
- Recipes assigned for each screen
- Long recipe names
- Add descriptions or instructions

Data Logging/Reporting

- Select and log **ANY variable**
- Export to .CSV file on-line
- Create event-based batch reports
- Add lot code/static data to report
- **Allows Historical screen replay**

✧ SCADA Software for people with *other* jobs! ✧

- * Automatic Database Configuration via Instrument Views
- * Graphics Editor includes bitmap import, bar graphs, text/object color changes, buttons
- * Data Logging including alarms, events, timed logs, simple batch reporting
- * Historical Replay of trends or graphic screens
- * Unlimited Multi-pen Trend Charts
- * Automatic chart / screen printing
- * Flexible Recipe Configuration
- * Full Screen operation for *Touchscreen*
- * Recording of operator actions/event
- * Remote (Client) Stations (Ethernet Networking of multiple SpecView 32 PC's)
- * Powerful Password System
- * Alarm Monitoring/Time Stamping
- * Strategy Controller (Event/Action list) for Automation and Automatic Batch Reports
- * Dynamic Data Exchange (DDE)
- * Unlimited tags – no cost adders
- * *Direct Ethernet* driver (HC900, TrendView)
- * Support for Windows XP, 2000, NT, 98, Me
- * OPC Client Option
- * Languages –English, German, French

Configure in MINUTES not Hours at 1/4 the cost of conventional SCADA!

**When choosing a SCADA system, go beyond the drawing tools
Ask to see how to.....**

- ⇒ Put a new value on the screen, add a bar graph or trend chart
- ⇒ Store a value as part of a recipe, define recipes to include SP program data
- ⇒ Add a data point for data logging

SpecView 32 supports:

UDC 2300/3000/3300 Controller/Programmers
DR4300/4500 Chart Recorders + Programmer
UDC 700/1000/1500 Controllers, UDI 1500
DCP 50/100 Controller Programmer

HC900 Hybrid Controller
UMC800 Universal Multiloop Controller
DPR 100/180/250/3000 Chart Recorders
TrendView Recorder